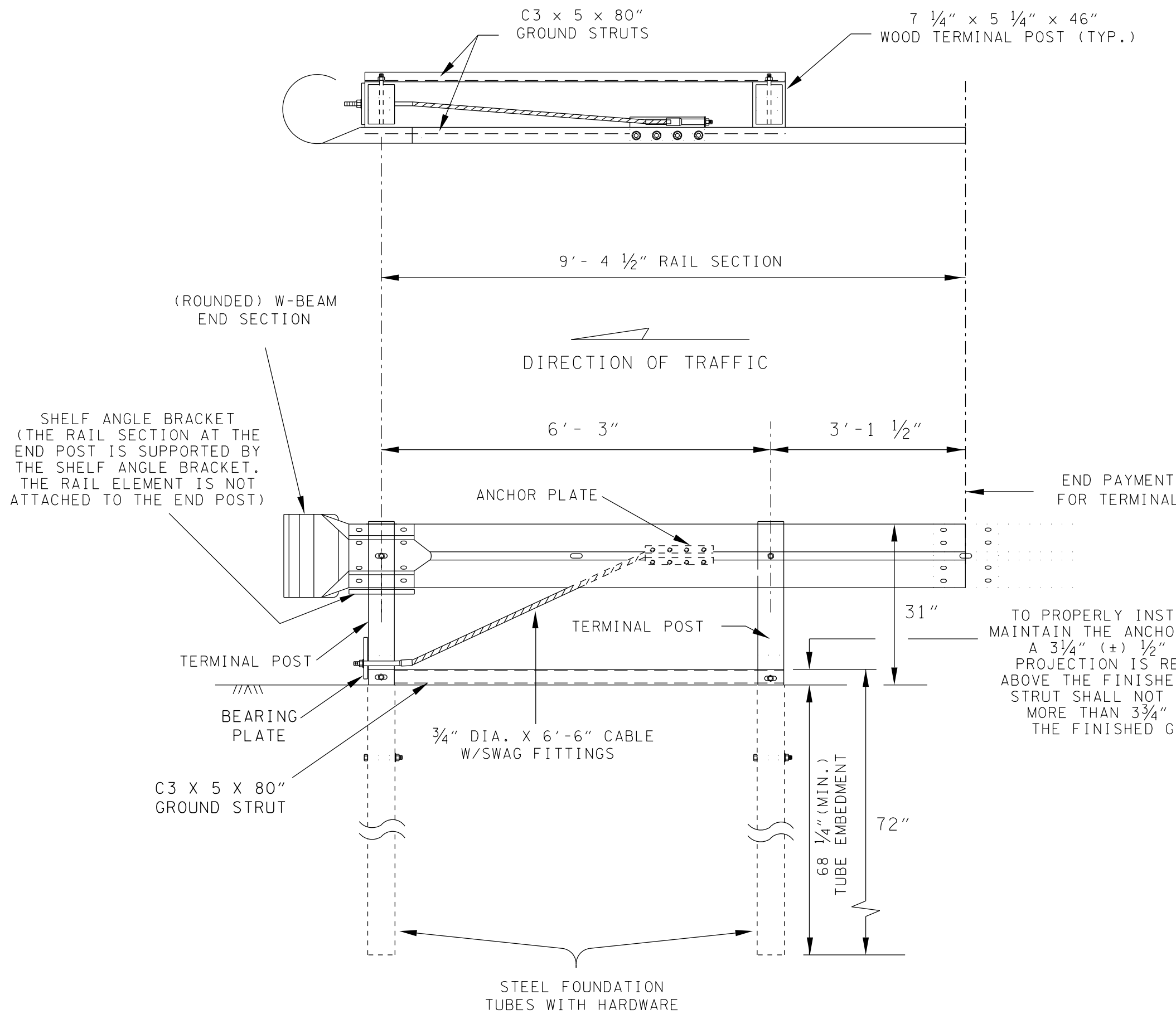


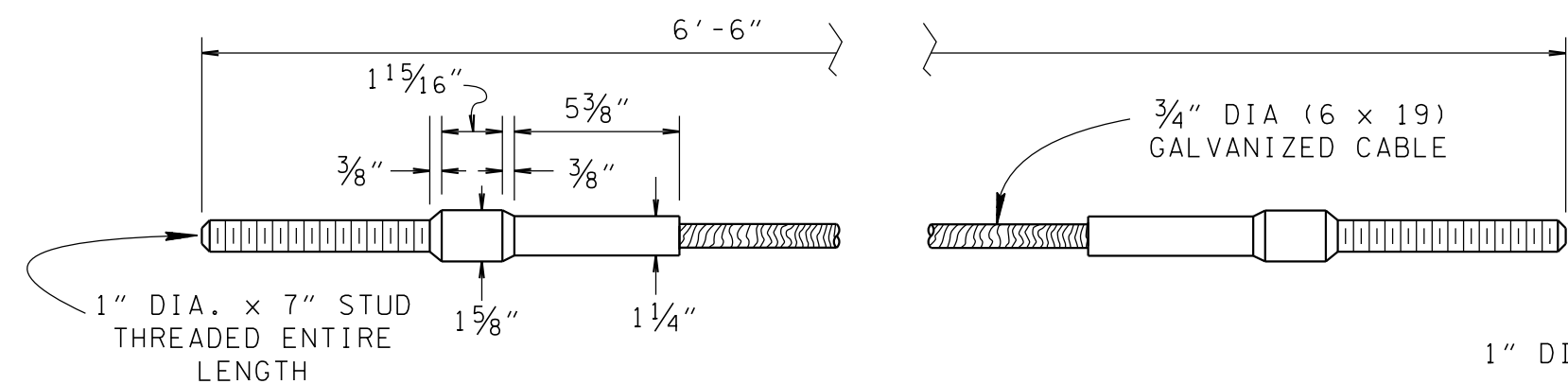
REV. 5-1-15: REVISED NO.1 & 2  
BREAK WAY POSTS WITH 5'-0" TUBE  
SLEEVE.

REV. 10-10-16: REMOVED TYPE 21  
AND IN-LINE FROM TITLE, UPDATED  
POST DETAIL, UPDATED STRUT DETAIL,  
ADDED RAIL DETAIL, AND UPDATED  
NOTES.



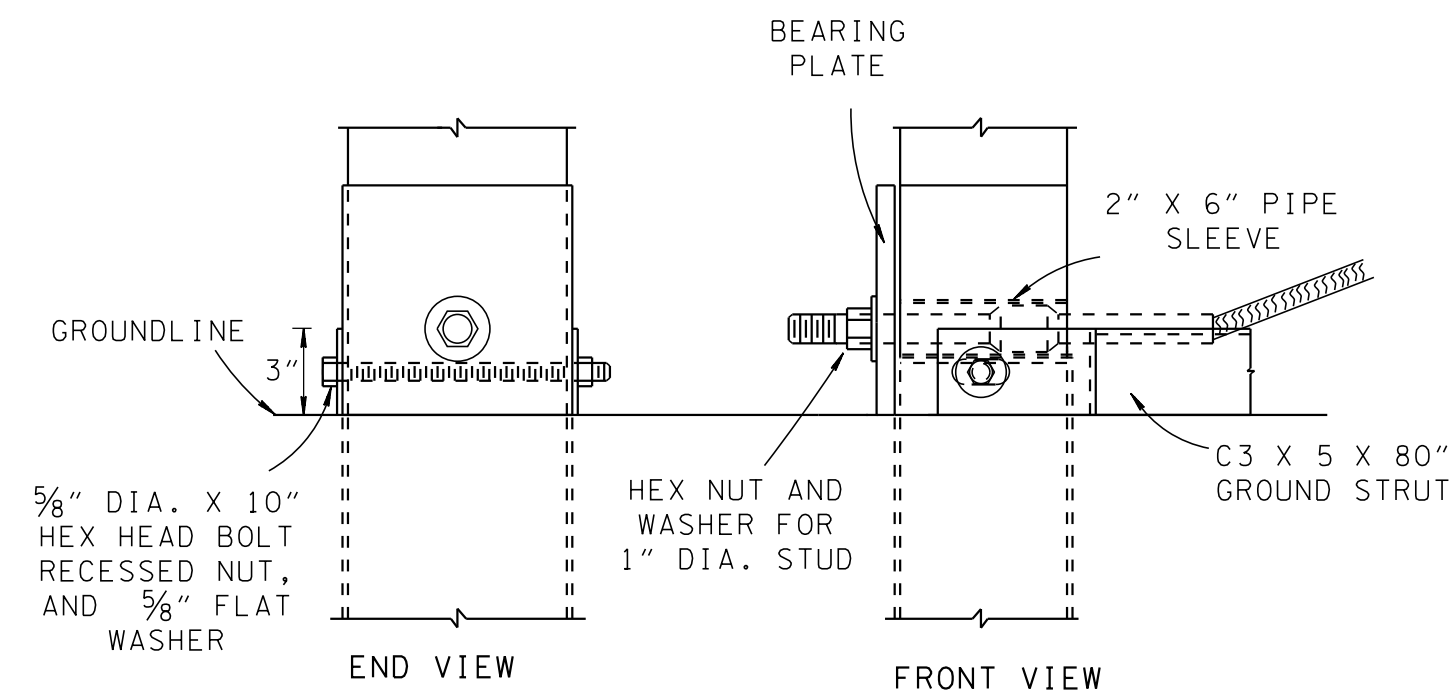
### DOWNSTREAM ANCHOR TERMINAL

ONLY FOR DOWNSTREAM USE, WHEN LOCATED OUTSIDE THE HORIZONTAL CLEARANCE AREA OF OPPOSING TRAFFIC

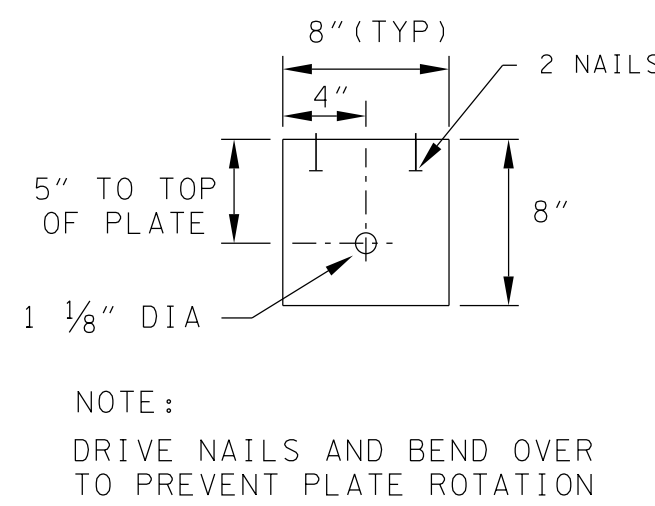


### STANDARD SWAGE FITTING AND STUD

NOTE: CABLE TO BE SWAGE-CONNECTED

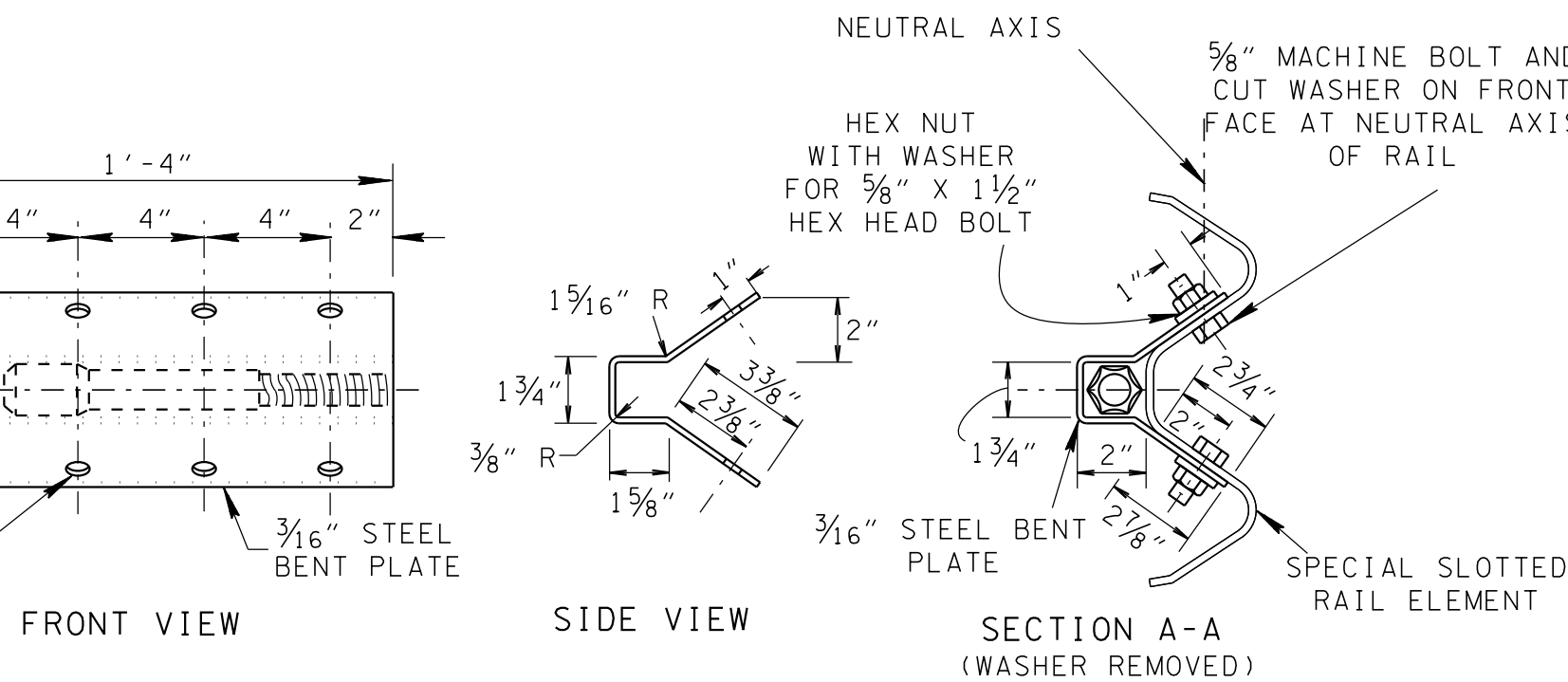


### BEARING PLATE ASSEMBLY DETAIL



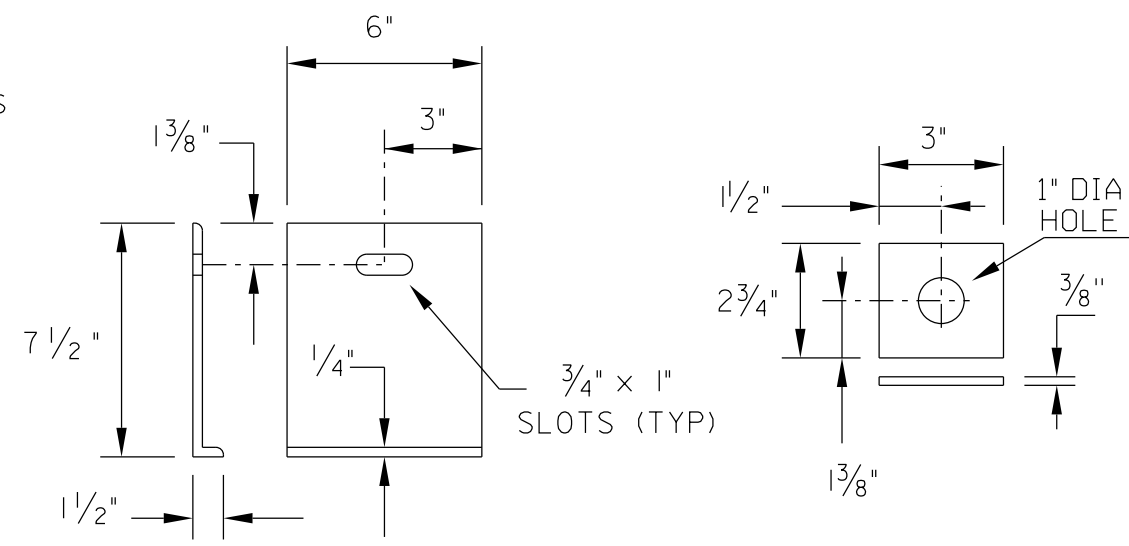
### BEARING PLATE

8" x 8" x 5/8" PL



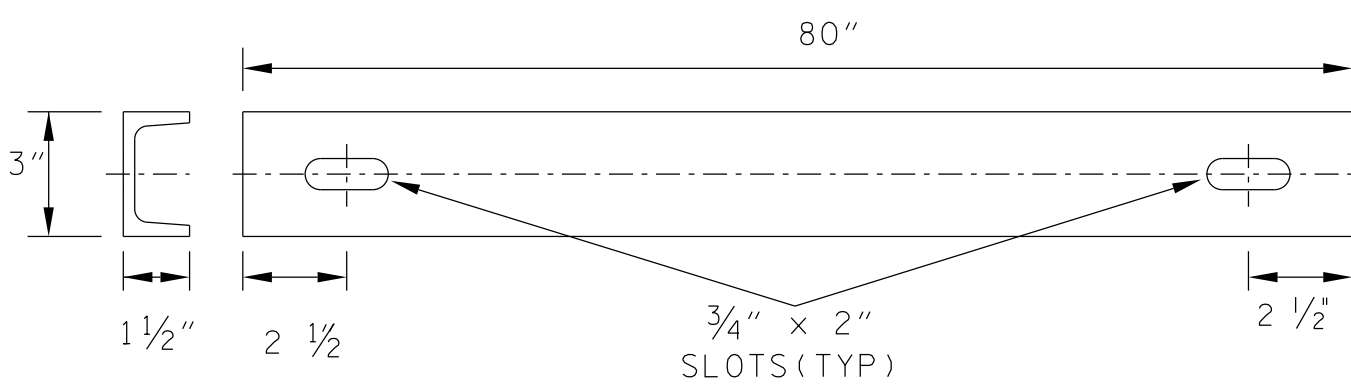
### ANCHOR PLATE ASSEMBLY DETAILS

(ANCHOR PLATE, (8) 5/8" X 1 1/2" HEX HEAD BOLTS, NUTS, AND WASHERS)



### SHELF ANGLE BRACKET

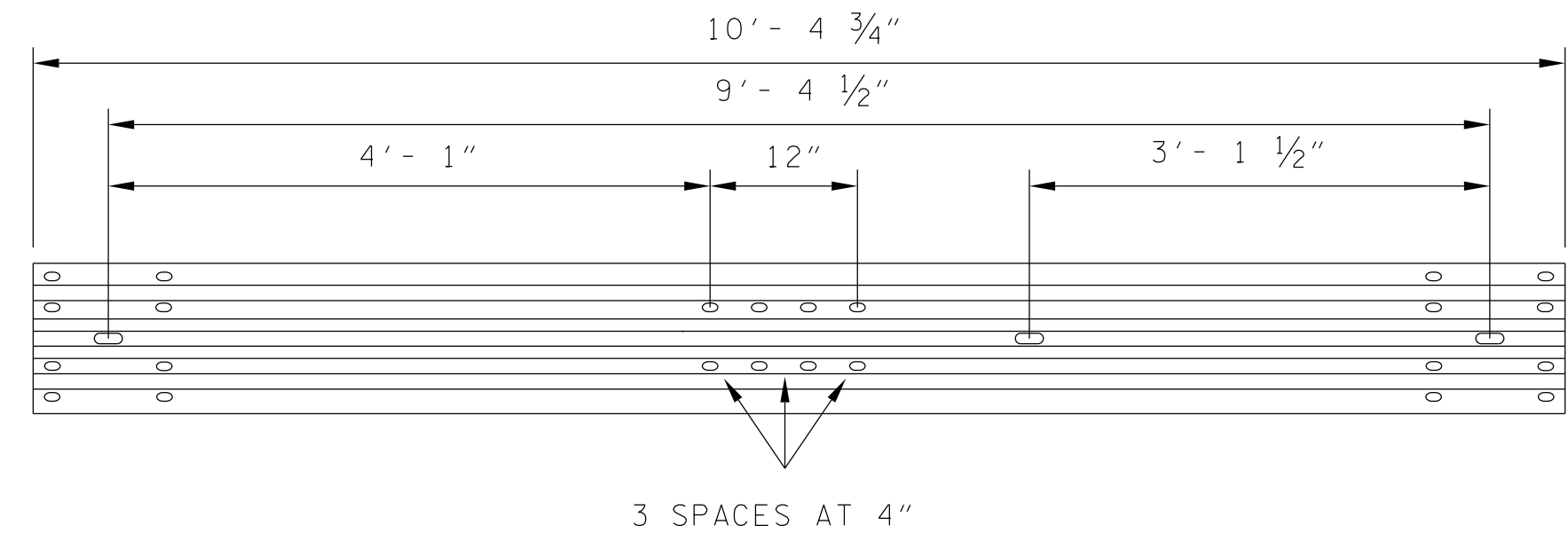
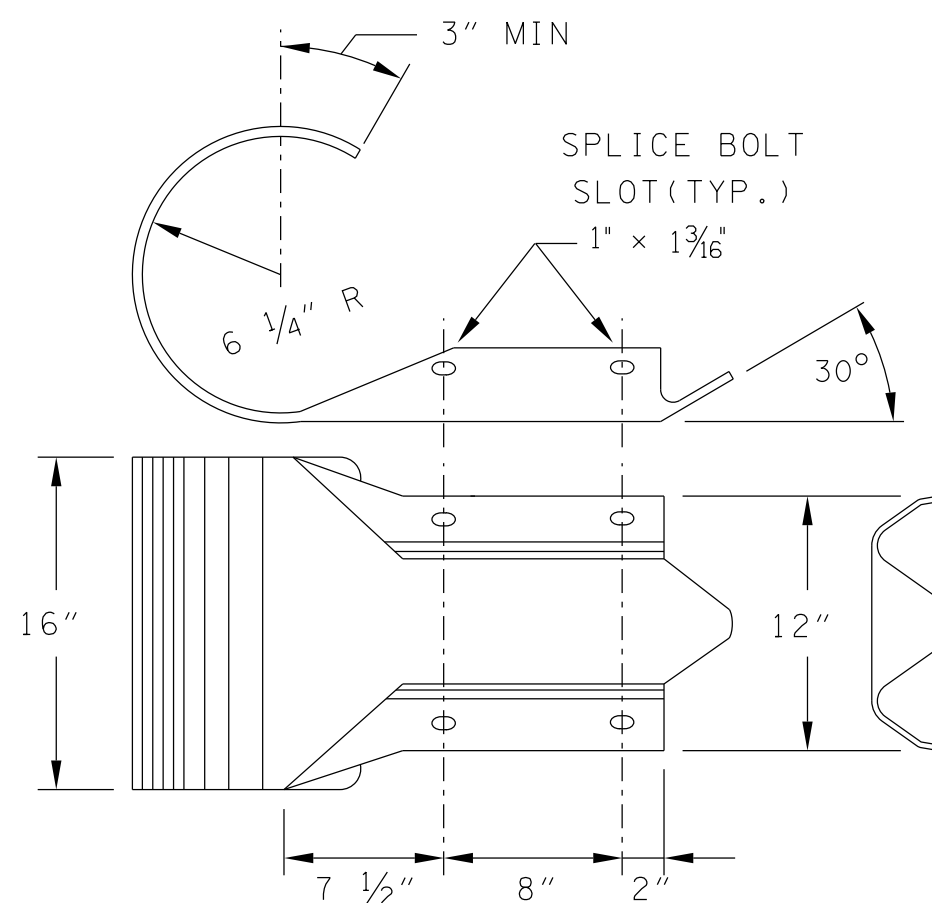
### END PLATE



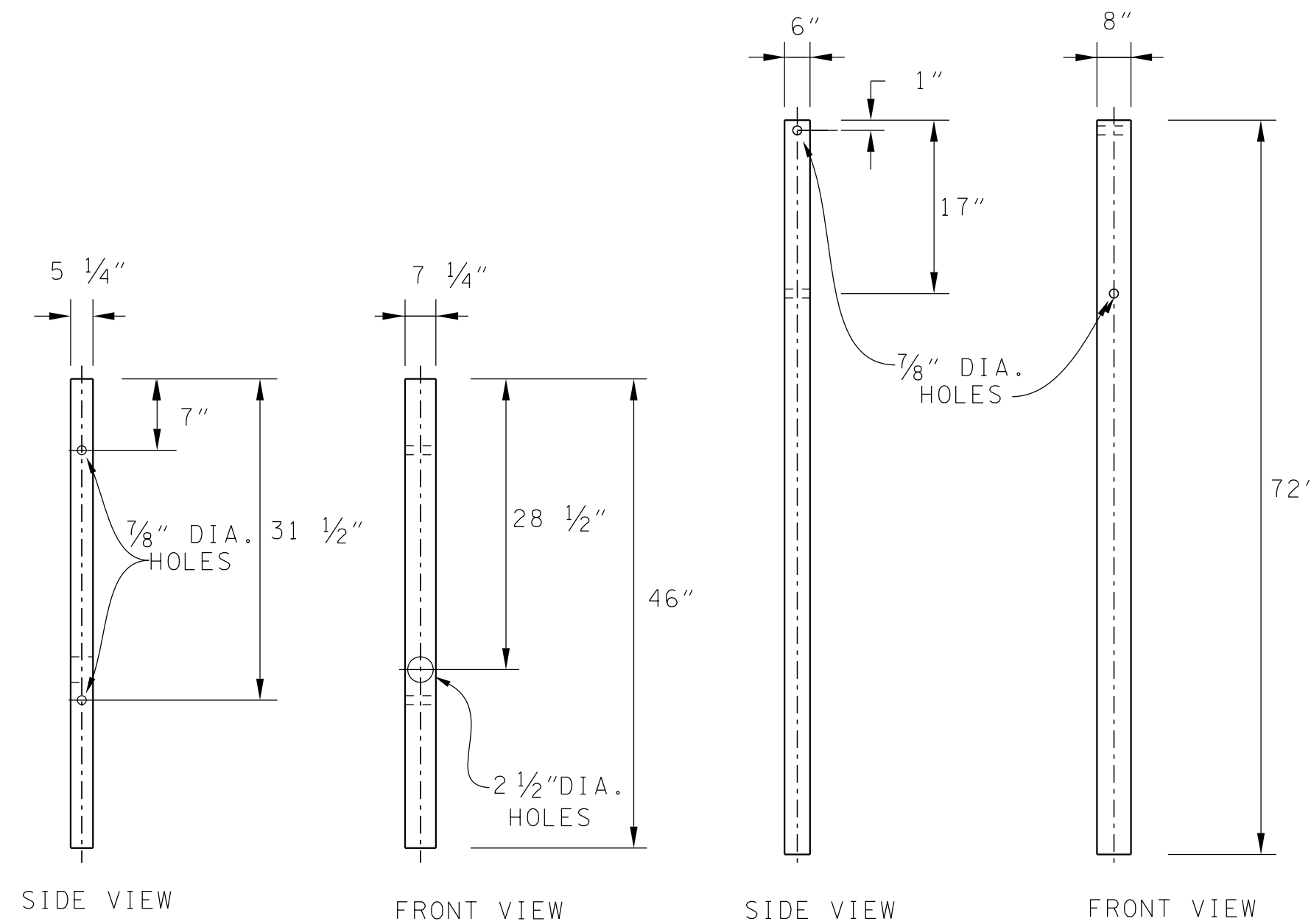
### GROUND STRUT

C3 x 5 x 80", GRADE A36

### W-BEAM END SECTION (ROUNDED) (12 GA.)



### TERMINAL RAIL ELEMENT



### TERMINAL POST

7 1/4" x 5 1/4" x 46" WOOD POST

### STEEL FOUNDATION TUBE

6" x 8" x 1/8" x 72" STEEL TUBE

### GENERAL NOTES

- TYPE 13 GUARDRAIL TERMINAL SHALL ONLY BE INSTALLED AT TRAILING ENDS(DOWNSTREAM) WHEN LOCATED OUTSIDE THE HORIZONTAL CLEARANCE AREA OF OPPOSING TRAFFIC. SEE S-CZ-1.
- ALL HOLES IN WOOD POSTS ARE TO BE DRILLED BEFORE PRESERVATIVE TREATMENT IS APPLIED.
- ALL CUTTING, DRILLING, AND WELDING OF STEEL COMPONENTS SHALL BE DONE BEFORE GALVANIZING.
- THE FINISHED CABLE ASSEMBLY WILL NOT BE ACCEPTABLE UNLESS IT IS IN TENSION WITH NO SAG.
- OTHER ANCHOR CABLE ASSEMBLIES PROVIDING A MINIMUM BREAKING STRENGTH OF 40,000 POUNDS PER SQUARE INCH WILL BE ACCEPTABLE.
- TO BE PAID UNDER ITEM NO. 705-04.03 GUARDRAIL TERMINAL (TYPE 13) PER EACH. (SEE S-PL-2)
- ALL HARDWARE SHALL CONFORM TO ASTM A307 UNLESS OTHERWISE SHOWN.
- DESIGN BASED ON AASHTO MASH TL-3, TT1 REPORT 9-1002-6.

MINOR REVISION -- FHWA  
APPROVAL NOT REQUIRED.

STATE OF TENNESSEE  
DEPARTMENT OF TRANSPORTATION

TYPE 13  
GUARDRAIL ANCHOR

7-11-13

S-GRA-3